

Excursion

Get the most out of your time in Shimanami by bike!

Date: 14 (Sat.) June, 2025 9 a.m. – 6 p.m.



Itinerary

- 9 a.m.

● Meeting point

Onomichi Port (Inside the car parking)

Rental bike (◆Recommended Bike: Cross Bike, E-bike)

[Bike Rental URL](#) ◆ Please reserve your rental bike in advance.

Pick up terminals: ① Onomichi Port

Drop off terminals: ④Setoda Tourist Information Center



Onomichi Port

- 10-min ferry across the Onomichi Channel to Mukaishima Island (100 yen/person, 10 yen/bike)

- After approx 3 km, turn south along Mukaishima's east coast which offers great views of the Innoshima Bridge.

↓ Approx 10km

Tachibana Coast

- Climb up to the Innoshima Bridge which has a dedicated cycle lane under the bridge.

- Descend to Innoshima Shimanami Beach.

↓ Approx 10km

- From Innoshima Shimanami Park, it is approx 10 km along the coast to Ikuchi Bridge.

↓ Approx 12km

Ikuchi Bridge

- Enjoy great views as you cross the 490m Ikuchi Bridge.

↓ Approx 8km

Setoda

- The road south passes Setoda Sunset Beach before climbing up through the orchards of Lemon Valley to the impressive Tatara Bridge across to Omishima.

↓ Approx 8km

1 p.m.

Tatara Shimanami Park

Tatara Shimanami Park is a major rest stop.

As well as bathrooms, a restaurant, fast food outlets, a farmers' market, and souvenir shop, it is home to the “Cyclist Sanctuary” monument.

We eat lunch and take a break in this park for about 60 minutes.

↓ Approx 10km

3 p.m.

Kosanji Temple



- Kosanji Temple is a temple belonging to the Honganji Sect of the Jodo Shinshu School of PureLand Buddhism.

Kozo Kosanji, an industrialist and early 20th-century pioneer of French-style welding techniques based in Osaka, founded the temple in 1936 as a family memorial dedicated to his late mother.



The Hill of Hope (Miraishin No Oka)

- Family ties and world peace

Designed and created by Itto Kuetani, a sculptor who is active in Italy, this marble garden was opened in October of 2000. The theme of the garden is “Familial Ties” and it represents a peaceful world that is filled with hope for the future.

↓ Approx 1km

Setoda Tourist Information Center

- Return the rental bike

↓ walk approx. 0.5 km

5 p.m.

Setoda Port

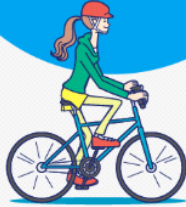
- Take the ferry to Onomichi Port

◆ This is the last ferry. Please be on time.

- 45-min ferry across the Setoda Port to Onomichi Port (1500 yen/person)



Setouchi Shimanami Kaido
Yumeshima Kaido
Recommended Cycling Routes



瀬戸田町観光案内所
Setoda Tourist
Information Center

瀬戸田サンセットビーチ
Setoda
Sunset Beach


 上浦レンタサイクル
 (重点「道の駅」多々羅しまなみ公園)
 Kamiura Rental Cycle
 (Michi-no-Eki Rest Stop:Tatara Shimanami Park)

尾道市
Onomichi City

 尾道港(駅前港湾駐車場)
Onomichi port
(Eki-mae Port Parking Lot)



尾道市民センターむかいしま
Civic Center
Mukaishima

瀬戸田町観光案内所
Setoda Tourist
Information Center

瀬戸田サンセットビーチ
Setoda
Sunset Beach


 上浦レンタサイクル
 (重点「道の駅」多々羅しまなみ公園)
 Kamiura Rental Cycle
 (Michi-no-Eki Rest Stop:Tatara Shimanami Park)

 尾道港(駅前港湾駐車場)
Onomichi port
(Eki-mae Port Parking Lot)



尾道市民センターむかいしま
Civic Center
Mukaishima

瀬戸田町観光案内所
Setoda Tourist
Information Center

瀬戸田サンセットビーチ
Setoda
Sunset Beach


 上浦レンタサイクル
 (重点「道の駅」多々羅しまなみ公園)
 Kamiura Rental Cycle
 (Michi-no-Eki Rest Stop:Tatara Shimanami Park)

 **土生港(尾道市営中央駐車場)**
Habu port
(Onomichi Municipal Chuo Parking Lot)
※土生港から尾道へはバスをご利用ください。

★大山祇神社

西瀬戸自動車道